

Ex No 5

PRINTER ADMINISTRATION

Aim:

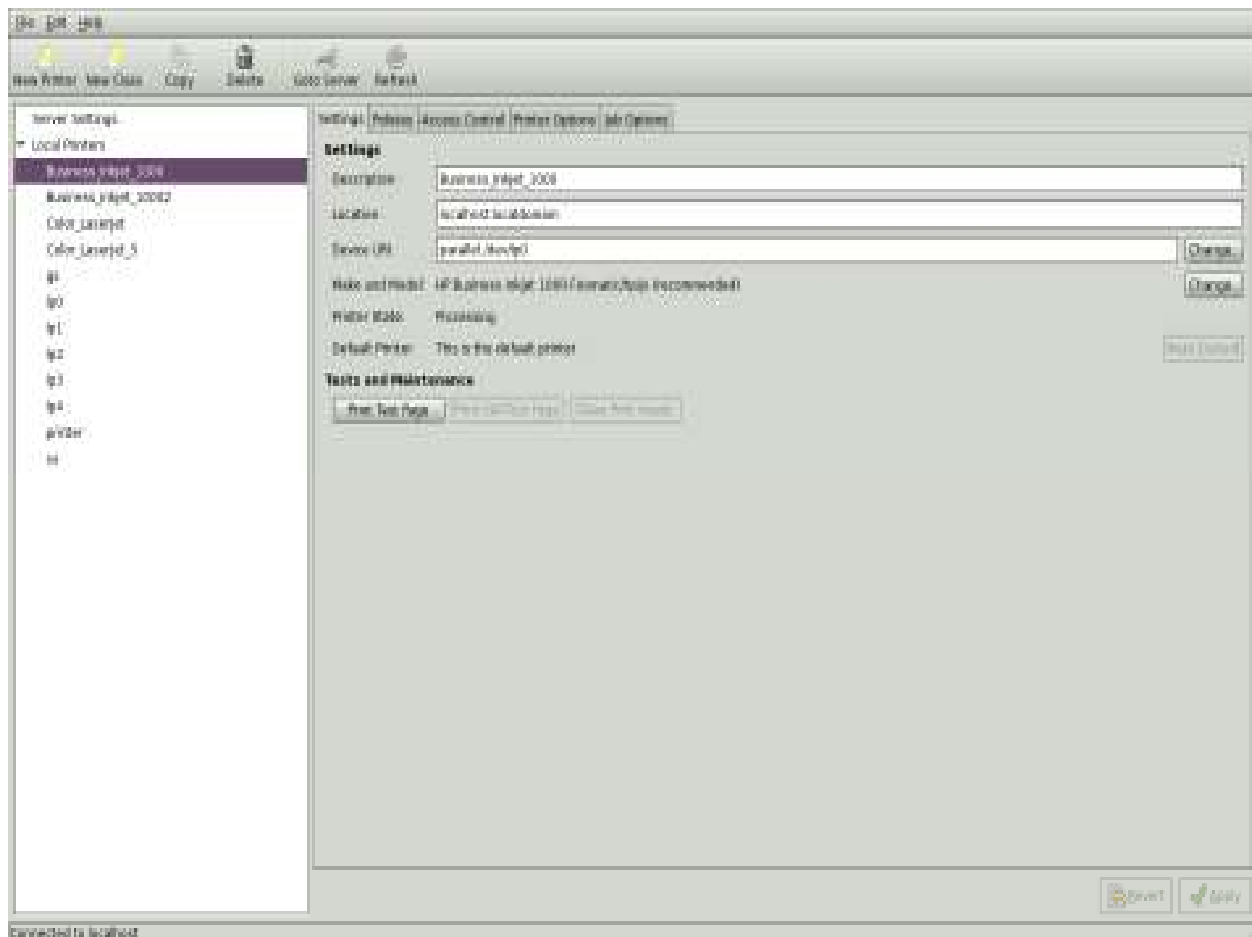
To setup a printer and administer a printer with CUPS.

Procedure:

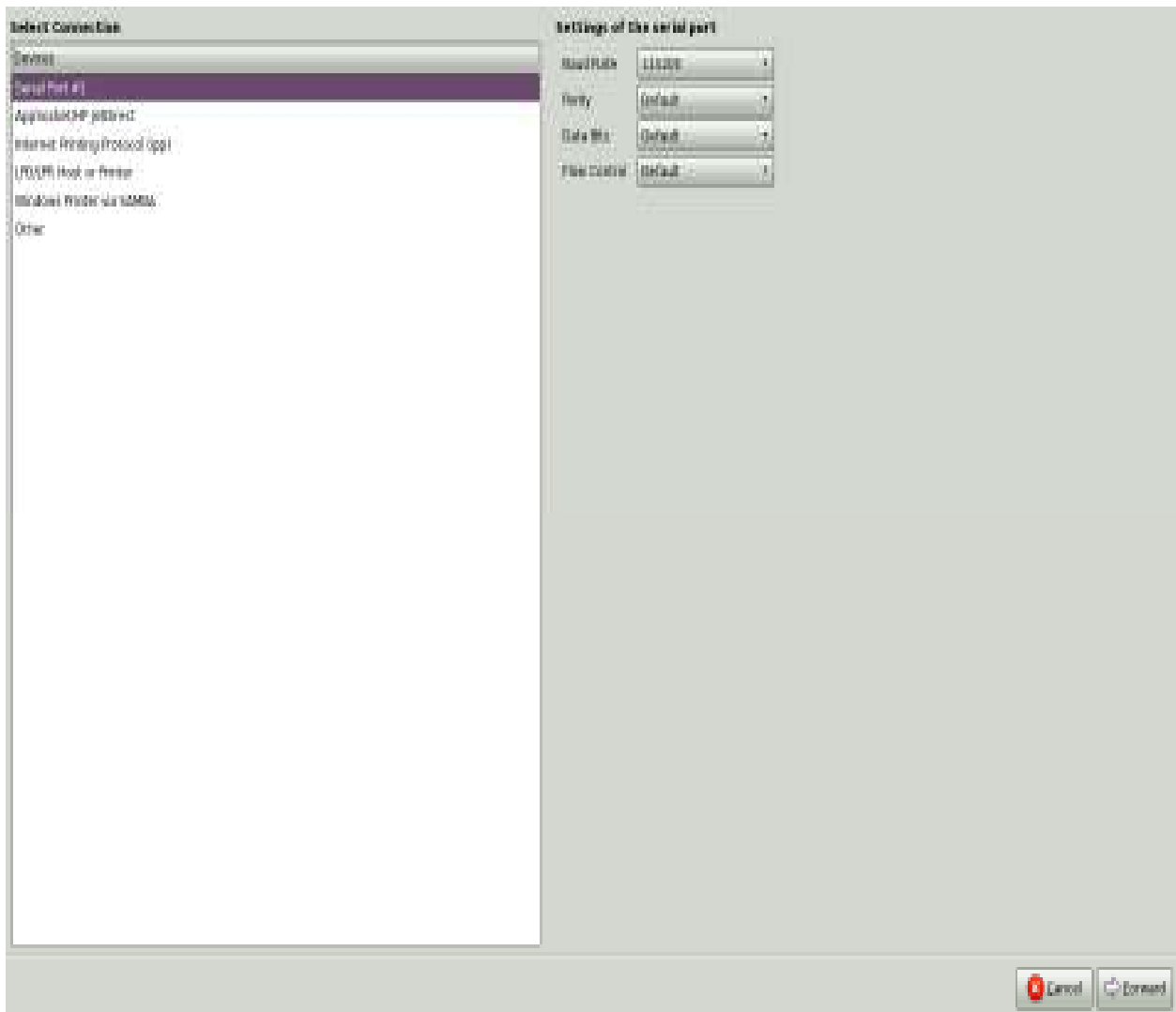
(I) Setting up a printer

(a) To setup a printer, the configuration file “system -config-printer” which is present in /usr/bin/system-config-printer is run in terminal as a root.

(b) A window will be opened and select New Printer tab.



(c) In New printer window, select Serial port #1 and click forward.



(d) Select Hp as option and click forward button.

Select printer from database

The fontomatic printer database contains various manufacturer provided PostScript Printer Description (PPD) files and also can generate PPD files for a large number of (non PostScript) printers. But in general manufacturer provided PPD files provide better access to the specific features of the printer.

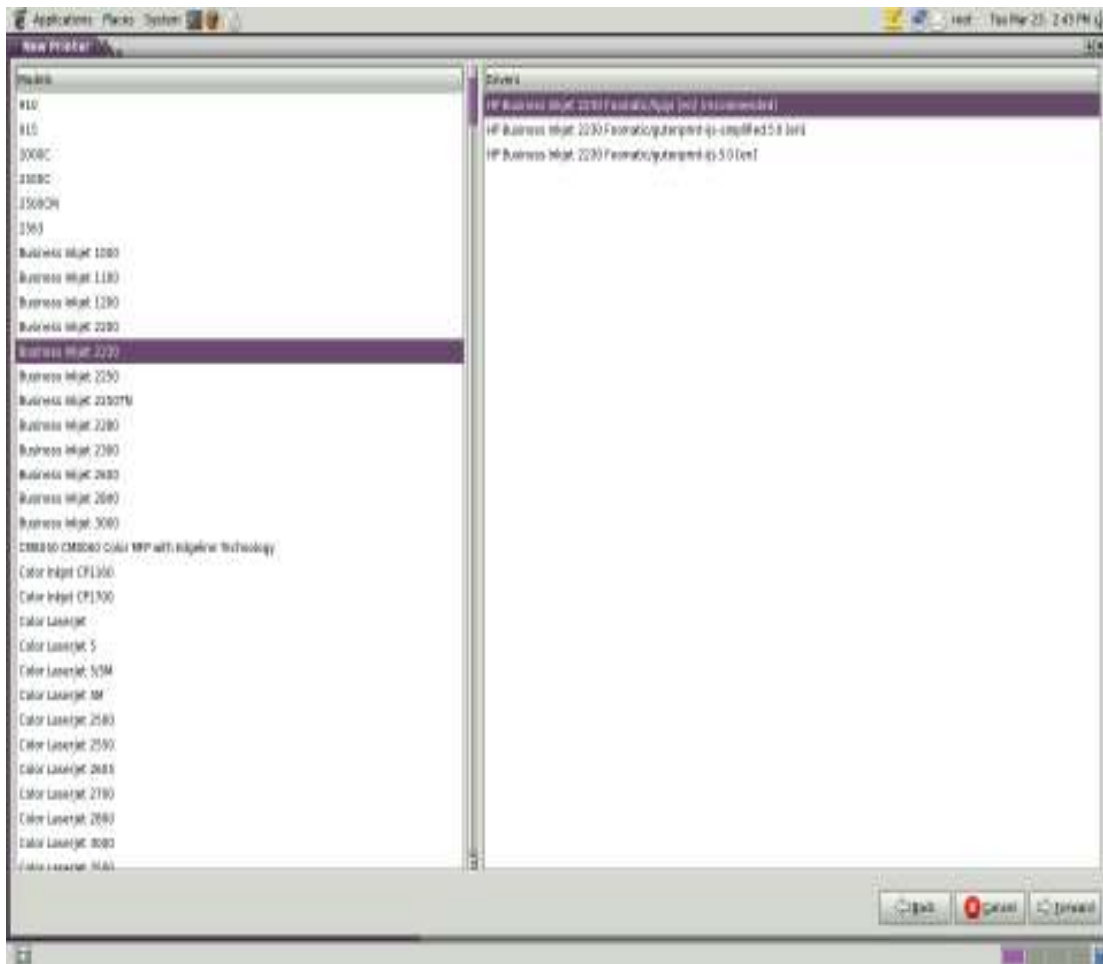
Makes

- Canon
- Citizen
- Citah
- Compaq
- DEC
- Dell
- Dymo
- Epson
- Fujifilm
- Fujitsu
- Gestetner
- Heidelberg
- Hitachi
- HP**
- IBM
- Imagen
- Infotec
- Intelitech
- Kodak
- KONICA MINOLTA
- Kyocera
- Larier
- Lexmark
- Mnota

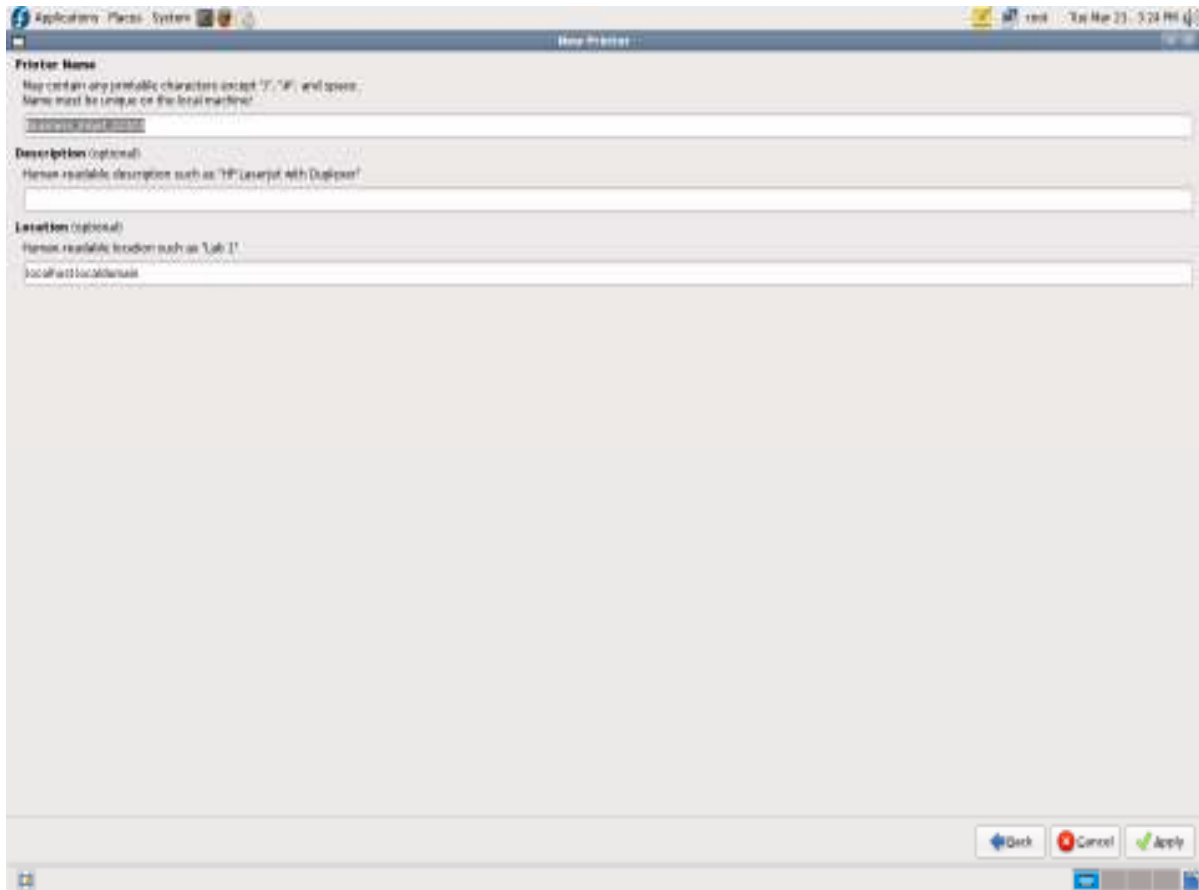
Provide PPD file

PostScript Printer Description (PPD) files can often be found on the driver disk that comes with the printer. For PostScript printers they are often part of the Windows® driver.

(e) Select the printer model to be connected to your system and select forward.



(f) click apply button.



Now we try to print the file, since we don't have printer attached to /dev/lp0, the job will be queued forever. To verify the status of the print queue, type the following commands in terminal.

```
# lp /root/install.log
```

```
# lpstat
```

(ii)ADMINISTER A PRINTER:

```
# lpc
```

lpc command limits control over printer and class queues provided by CUPS. It is also used to query the state of queues.

(i) **lpc exit**

Exits the command interpreter.

(ii) **lpc help**

Displays a short help message.

(iii) **lpc status[queue]**

Displays the status of one or more printer or class queue.

lpq

lpq shows the current print queue status on the named printer, jobs queued on the default destination will be shown if no printer or class is specified on the command line.

lpq -E -a -l -U username

Options

-E Forces encryption when connecting to the server.

-U username Specifies an alternate username.

-a Reports jobs on all printers.

-l Requests a more verbose reporting format.

-P destination[/instance] Specifies an alternate printer or class name.

-h server[:port] Specifies an alternate server.

lprm

lprm cancels print job that have been queued for printing. If no arguments are supplied, the current job on default destination is cancelled.

Synopsis

lprm -E -U username -P printer model/name

-E Forces encryption when connecting to the server.

-U username Specifies an alternate username.

-P destination[/instance] Specifies an alternate printer or class name.

-h server[:port] Specifies an alternate server.